



## Fact Sheet - Population

### ● General Demographic Features

		WBGS Total	West Bank	Gaza
<b>Total Population</b>	<b>1997 census:</b>	2,895,683	1,873,476 <sup>1</sup>	1,022,207
	<b>Mid-2001<sup>2</sup></b>	3,298,951	2,102,360	1,196,591
	<b>Projected 2005<sup>3</sup></b>	3,986,813	2,514,480	1,472,333
	<b>Projected 2015<sup>3</sup></b>	5,758,360	3,517,154	2,241,206
	<b>Projected 2025<sup>3</sup></b>	7,401,797	4,408,941	2,992,856
<b>Population, 0-14 years</b> (mid-2001):		47%	45%	50%
<b>Population, 0-19 years</b> (mid-2001):		57%	55%	61%
<b>Birth rates</b> (% per 1,000)		40.1	37.8	44.2
<b>Population growth</b> (mid-2001):		5%	4.7%	5.4%
<b>Median Age</b> (years):		16.5	17.4	15
<b>Sex ratio</b> (male-female):		102.1	102.3	101.8
<b>Fertility rate</b> (1999):		5.9	5.5	6.8
<b>Life expectancy at birth:</b>		71.9 years	72.4 years	71.2 years
<b>Average Household Size</b> (persons):		6.1	5.7	6.9

<sup>1</sup> Incl. East Jerusalem. <sup>2</sup> PCBS, Population in the Palestinian Territory, 1997-2025. <sup>3</sup> PCBS, Population Projection, Medium Series  
 (Source: PCBS, *Population, Housing and Establishment Census*, Dec. 1997, and *Population Indicators*, Mid-2001)

### Distribution of the Palestinian Population by Governorates and Cities (mid-2001)

(Source: PCBS, *Small Area Population, 1997-2010*)

Locality	Number of Inhabitants	
	in Governorate	City only
Jenin	225,711	30,836
Tubas	41,067	13,727
Tulkarm	149,188	39,253
Qalqilya	81,942	37,585
Salfit	54,595	8,306
Nablus	290,621	115,872
Ramallah/Al-Bireh	243,432	21,348 / --
Jerusalem	367,003*	235,041**
Jericho	37,066	17,580
Bethlehem	153,954	25,580
		(excl. Beit Jala & Beit Sahur)
Hebron	457,781	140,055
<b>Total West Bank</b>	<b>2,102,360</b>	<b>684,952</b>
North Gaza	222,34	Jabalia 66,242
Gaza City	424,509	343,904
Deir Al-Balah	173,416	41,337
Khan Yunis	233,202	105,095
Rafah	143,120	59,301
<b>Total Gaza Strip</b>	<b>1,196,591</b>	<b>615,879</b>
<b>TOTAL</b>	<b>3,298,951</b>	<b>1,300,831</b>

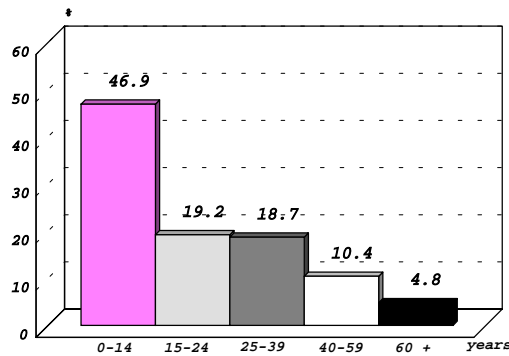
\* inside and outside checkpoints (estimates)

\*\* annexed East Jerusalem (estimates)



**Age Structure,  
 WBSG, 2000:**

(Source: PCBS,  
 Projected Population,  
 Mid-2000, Medium



**Distribution of the Palestinian People Worldwide**

Inside <sup>1</sup> (mid-2001)		Outside	I <sup>2</sup>	II <sup>3</sup>	III <sup>4</sup>
West Bank & Gaza Strip	3,298,951	Jordan	2,598,104	2,472,501	2,626,000
		Lebanon	387,766	456,824	463,000
		Syria	394,695	494,501	411,000
		Egypt	57,500	51,805	48,000
Areas Occupied in 1948	1,012,741	Saudi Arabia	287,499	291,778	299,000
		Kuwait & other Gulf	151,959	149,786	135,000
		Libya and Iraq	-	78,884	79,000
		Other Arab countries	113,358	5,887	-
		The Americas	-	216,196	-
		Other Countries	511,355	275,303	606,000
		<b>Total Inside</b>	<b>4,311,692</b>	<b>Total Outside</b>	<b>4,502,236</b>

<sup>1</sup> PCBS, Population in the Palestinian Territory, 1997-2025.    <sup>2</sup> PCBS, 2001.

<sup>3</sup> Salman Abu Sitta. *Palestine 1948 - Commemoration of Al-Naqba*. London: Palestinian Return Center, May 2000.

<sup>4</sup> Justin McCarthy. "Population", entry in *Encyclopedia of the Palestinians*, ed. By Philip Mattar. New York, 2000.



## Population of Israel, 2001

---

<b>Total population:</b>	6,458,000	<b>Projection of Population</b> (medium variant):			
• Jews	5.243,000 (77.8%)				
• Non-Jews (Arabs):	1.215,000 (18.7%)				
- Muslims	(15.2%)	2005	2010	2020	
- Christians	(2.15%)	Jews	5.320,6	5.688,9	6.368,4
- Druze	(1.6%)	Muslims	1.124,4	1.299,8	1.676,6
- Others	(2%)	Christians	116,7	124,4	138,5
		<b>Total</b>	<b>6.930,0</b>	<b>7.534,4</b>	<b>8.672,9</b>
<b>Annual growth rate:</b>	Israel all 2.3%*				
	Jews 1%*				
	Arabs 4.6%*				

---

(Source: Israeli CBS, *Statistical Abstract of Israel*, 2001.)

\* Or 147,000 in total numbers, which is 20,000 less than in the previous year due to a 25%-decrease in new immigrant arrivals. Of the 47,000 new immigrants, 80% came from the former Soviet Union (*Jerusalem Post*, 17 Sept. 2001).

### Recommended Research Sources

<http://www.pcbs.org/english/populati/populati.htm>

<http://www.pcbs.org/inside/selcts.htm>

**Heiberg, Marianne and Geir Ovensen.** *Palestinian Society in Gaza, West Bank and Arab Jerusalem - A Survey of Living Conditions*. FAFO Report 151, 1993.

**Palestinian Central Bureau of Statistics (PCBS).** *Demographic Survey in the West Bank and Gaza Strip*. Annual updates.

**Palestinian Central Bureau of Statistics (PCBS),** *Population, Housing and Establishments Census*. Dec. 1997

**Pedersen Jon, Sara Randell and Marwan Khawaja (eds.).** *Growing Fast - Palestinian Population in the West Bank and Gaza Strip*. FAFO Report 353, 2001. (also available at: [www.fafo.no/pub/rapp/353/353.pdf](http://www.fafo.no/pub/rapp/353/353.pdf))